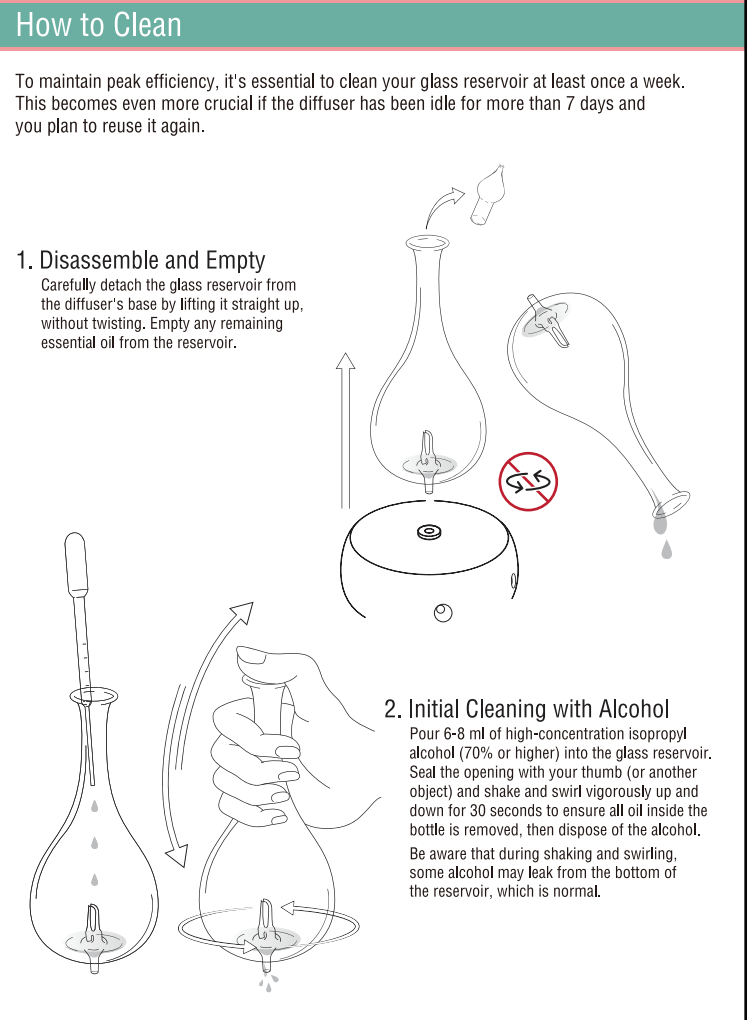
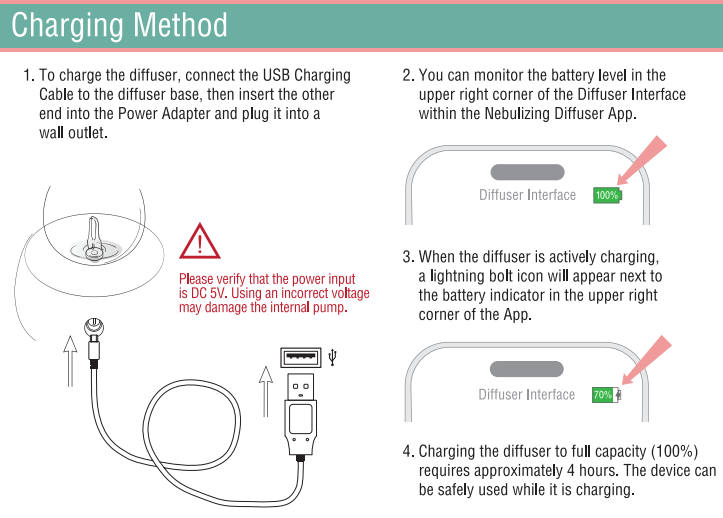
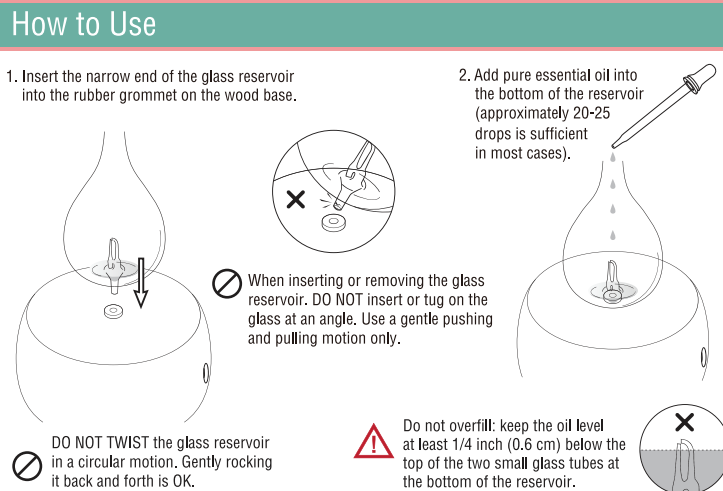
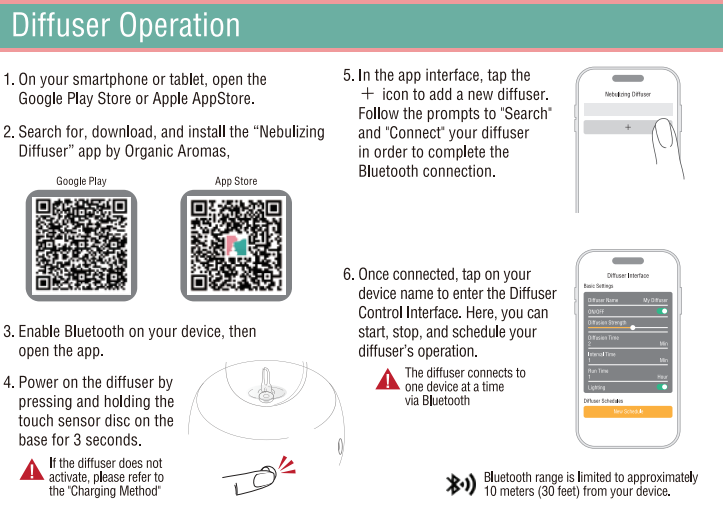
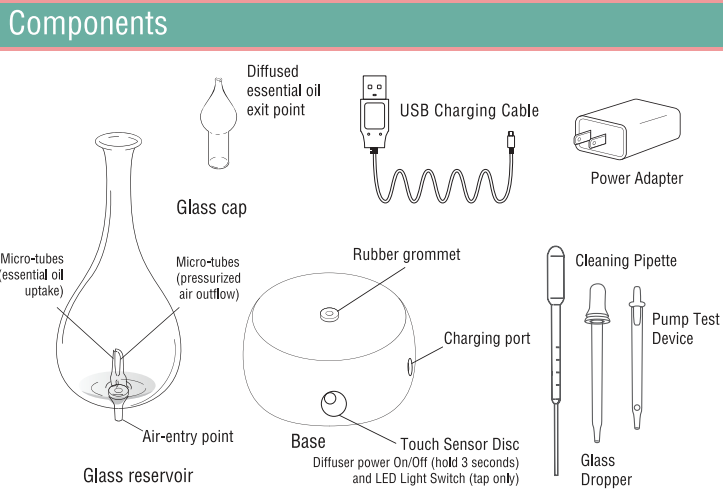


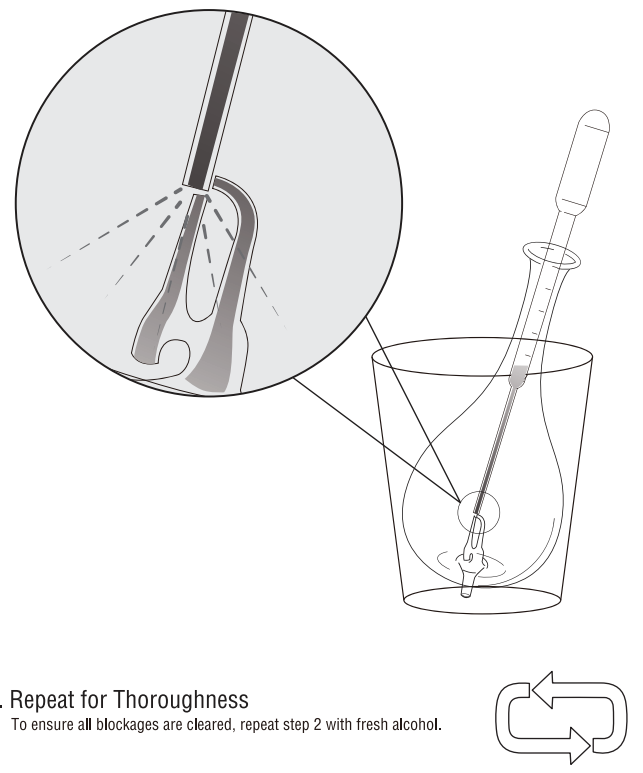
Manual & Warranty

Smart Nebulizing Diffuser

Wireless • Rechargeable
Bluetooth • App-Controlled



3. Deep Cleaning of Micro-tubes
Pour another 6-8 ml of high-concentration isopropyl alcohol into the reservoir. Use the provided plastic cleaning pipette to draw some alcohol. Place the tip of the pipette directly on the straight micro-tube and forcefully squeeze the plastic cleaning pipette to ensure sufficient force is applied to expel the alcohol through the micro-tubes. Perform this action several times until all blockages in the micro-tubes are cleared, then empty the alcohol from the bottle.



Caution

Product failure or other damage caused by failure to comply with the following precautions will void the free warranty. So please pay special attention.

Nebulizing Diffuser Precautions

- Regularly clean the diffuser according to the method described in the instructions manual.
- Blockage of the micro-tubes may cause the diffuser to malfunction.
- In order to avoid product failure, glass breakage or surface corrosion, please beware of oil buildup on and around the wooden base.
- In order to avoid product failure, abnormal operation or damage to the surrounding environment and objects, do not use the product in the following locations:
 - Under direct sunlight, on a heater/radiator, near a fire, in a place with extremely high temperature or near the outlet of an air conditioning unit.
 - On mats, quilts, or any location that is unstable or tilted at an angle.
- This product is only suitable for use with the electric adaptor provided by the Company, the use of other adapters may cause damage to the body.
- Do not disassemble, modify the product.
- Do not move the diffuser during operation.
- If you plan to not use the product for a long period of time, please perform a deep cleaning and thoroughly dry for safekeeping.

Essential Oil Precautions

- Please use pure essential oils. In order to avoid product failure, do not use the product with perfumes, synthetic fragrances or anything containing impurities or solids.
- Do not use essential oils that contain a carrier oil, such as jojoba oil, almond oil and grape seed oil. Also please do not use water.
- Please add the appropriate amount of essential oil depending on the frequency of use. Do not add too much oil at one time as contact with air will cause the oil to oxidize, become stiff and clog the nozzle.
- Avoid using thicker oils, such as sandalwood, cypress, benzoin, frankincense, etc., alone. Or immediately after their use, do a general cleaning to prevent the micro-tubes from clogging.

Activate Your Warranty

Warranty Information

- Upon receipt of your diffuser, please register your warranty at: [organicaromas.com/pages/warranty](https://www.organicaromas.com/pages/warranty)
- Organic Aromas will only guarantee those units that have properly registered their warranty
- In the case the product has been properly used, but experiences normal product failure, the company shall provide a one-year (from the date of purchase) free parts and services warranty.
- In the event of product failure, please prepare the product, accessories and original order information and present it directly to Organic Aromas.

The Company shall not provide any warranty for instances meeting the following situations:

1. Malfunctions that occur after one year from the date of purchase.
2. Malfunctions due to damage caused by letting liquids into the machine body.
3. Deliberately altering the purchase date and other information.
4. Malfunctions caused by fire, earthquake, storm, flood, pollution, disaster, war or other external factors.
5. Malfunctions caused by disassembling, modifying or repairing on your own.
6. Normal wear of LED lights, accessories and other consumables.
7. Malfunctions caused by failure to use specific essential oil or the unit as indicated.
8. Malfunctions caused by neglect or abuse.

Having Issues with Your Nebulizing Diffuser?

Perform the Pump Test

1. Insert the Pump Test Device into the base of your diffuser.
2. Turn the power on the low setting.
3. Watch the ball rise to the top
4. If ball does not rise slowly increase the volume.
5. If the ball is not rising on the high setting please reach out to us via info@organicaromas.com

Made In Taiwan

For all questions, comments or to report a problem or issue please contact www.OrganicAromas.com or email to info@organicaromas.com